



# SIMA LABS

**Sophisticated Industrial Materials  
Analytic Labs Pvt. Ltd.**

(GOVT. APPROVED TESTING LABORATORIES)

Address : A-3/7, Mayapuri Industrial Area,  
Ph-II, New Delhi - 110064

Phone : +(91)-(011) 43854300

Email : reports@simalab.com

CIN No : U74899DL1988PTC031785

Website : www.simalab.net | www.simalab.com



TC-11220



## TEST REPORT

ULR : TC1122026100000268F

Party Code : A/DLH/19526  
\*Issued to : Ajay Dalal  
RZ-10, Baba Haridas Nagar, Near New Anaj Mandi,  
Najafgarh, New Delhi-110043 - .

REPORT NO. : FS0117005526/N  
\*Customer Ref.No. : NS

\*Reference Date : 17/01/2026  
Date of Receiving : 17/01/2026  
Date of Issue : 31/01/2026  
Start Date of Analysis : 17/01/2026  
Date of Completion : 30/01/2026  
Sample Condition : OK  
Sample Packing : Plastic Bag  
\*FSSAI Lic. No : NS  
\*Sample Qty. : 01x5 Kg  
\*Batch No./Lot No. : KLMB 240

\*Sample Name : Shakti Bhog Atta  
\*Mfg. by : Mata Mansa Devi Roller Flour Mills  
\*Mfg. Date : 20/12/2025  
\*Exp.Date/Best Before : 19/04/2026

Test Method Deviation : NA  
Sample Collection : Sample Collected By Us

### RESULTS OF ANALYSIS

Reference : As per Party's Requirement

Description : Shakti Bhog Atta

S.No.	Test Parameters	Units	Results	Limits (as per FSSR-2011)	Test Method
<b>General Parameters</b>					
1	Protein	g/100g	12.06	Not specified	IS 7219:1973
2	Dietary fiber	g/100g	11.76	Not specified	AOAC 985.29 22nd ed 2023
3	Alcoholic acidity (ODB)	%	0.04	NMT 0.18	FSSAI 03.015:2023
4	Acid insoluble ash (ODB)	%	0.07	NMT 0.15	FSSAI 03.012:2023
5	Added colour	-	Free from added colour	It shall be Free from added colour	SIMA/FDL/STP/001
6	Added flavour	-	Free from added flavour	It shall be Free from added flavour	SIMA/FDL/STP/001
7	Moisture	%	11.08	NMT 14.0	FSSAI 03.006:2023
8	Odour	-	Free from odour	It shall be free from odour	SIMA/FDL/STP/001
9	Visible mould	-	Free from Visible mould	It shall be Free from visible mould	SIMA/FDL/STP/001



*Rupa Rani*  
Rupa Rani  
Reviewed By

Authorized Signatory

Bhoopendra Singh  
Tech. Manager

- Remarks:**
- This Test Report is not valid without a hologram.
  - The Results listed refer only to the above tested sample & applicable parameters. Endorsement of products is neither inferred nor implied.
  - Liability of laboratory is limited to the invoiced amount only. Any dispute arising out of this report shall be subject to Delhi jurisdiction only.
  - This Test Report is not to be reproduced wholly or in part as evidence in the Court of law without written permission from SIMA Labs Pvt. Ltd.
  - The Test Report should not be used wholly or in part in any advertising media without written permission from SIMA Labs Pvt. Ltd.
  - The sample(s) of Drugs & Cosmetics will be destroyed after one year, Perishable samples (Other than Drugs & Cosmetics) will be destroyed after 7 days and non perishable samples will be destroyed after 30 days of the date of issue of Test Report or unless otherwise specified.
  - SIMA Labs Pvt. Ltd. will not be held responsible for the authenticity of any photocopied, forged and or partially presented test reports.
  - SIMA Labs Pvt. Ltd. will ensure all corrective action as per our policy in case of any discrepancy in any sample tested by SIMA Labs Pvt. Ltd.
  - Re-testing charges will be applicable in case the results are reproducible.
  - Duplicable copy will be issued on chargeable basis.
  - SIMA Stands for : Sophisticated Industrial Materials Analytic

Page : 1 of 10

SB



Scan for Accreditation & Scope

\* Indicates details provided by the customer



# SIMA LABS

Sophisticated Industrial Materials  
Analytic Labs Pvt. Ltd.

(GOVT. APPROVED TESTING LABORATORIES)

Address : A-3/7, Mayapuri Industrial Area,  
Ph-II, New Delhi - 110064

Phone : +(91)-(011) 43854300

Email : reports@simalab.com

CIN No : U74899DL1988PTC031785

Website : www.simalab.net | www.simalab.com



TC-11220



## TEST REPORT

ULR : TC1122026100000268F

Party Code : A/DLH/19526

REPORT NO. : FS0117005526/N

S.No.	Test Parameters	Units	Results	Limits (as per FSSR-2011)	Test Method
10	Gluten (ODB)	%	10.02	NLT 6.0	FSSAI 03.013:2023
11	Uric acid	mg/kg	66.40	Max 100	SIMA/INS/STP/016
12	Free from living insects	-	Free from living insects	It shall be free from living insect	SIMA/FDL/STP/001
13	Free from abnormal flavours	-	Free from abnormal flavours	It shall be free from abnormal flavour	SIMA/FDL/STP/001
14	Free from filth (impurities or animal origins, including dead insect)	-	Free from filth (impurities or animal origins, including	It shall be free from filth /impurities of animal origin including dead insect)	FSSAI 03.003:2023

### Pesticide residues:

15	2,4-D Amine Salt	mg/kg	BLQ (LOQ 0.01)	Max. 0.01	SIMA/INS/STP/003
16	2,4-Dichlorophenoxy Acetic Acid	mg/kg	BLQ (LOQ 0.01)	Max. 0.01	SIMA/INS/STP/003
17	Abamectin	mg/kg	BLQ (LOQ 0.01)	Max. 0.01	SIMA/INS/STP/003
18	Acephate (expressed as mixture of Methamidophos & acephate)	mg/kg	BLQ (LOQ 0.01)	Max. 0.01	SIMA/INS/STP/003
19	Acetamiprid	mg/kg	BLQ (LOQ 0.01)	Max. 0.01	SIMA/INS/STP/003
20	Alachlor	mg/kg	BLQ (LOQ 0.01)	Max. 0.01	SIMA/INS/STP/003
21	Alpha Cypermethrin	mg/kg	BLQ (LOQ 0.01)	Max. 0.01	SIMA/INS/STP/003
22	Alpha naphthyl Acetic Acid	mg/kg	BLQ (LOQ 0.01)	Max. 0.01	SIMA/INS/STP/003
23	Ametroctradin	mg/kg	BLQ (LOQ 0.01)	Max. 0.01	SIMA/INS/STP/003
24	Ametyrn	mg/kg	BLQ (LOQ 0.01)	Max. 0.01	SIMA/INS/STP/003
25	Anilophos	mg/kg	BLQ (LOQ 0.01)	Max. 0.01	SIMA/INS/STP/003
26	Atrazine	mg/kg	BLQ (LOQ 0.01)	Max. 0.01	SIMA/INS/STP/003
27	Azimsulfuron	mg/kg	BLQ (LOQ 0.01)	Max. 0.01	SIMA/INS/STP/003
28	Azoxystrobin	mg/kg	BLQ (LOQ 0.01)	Max. 0.01	SIMA/INS/STP/003
29	Benfuracarb	mg/kg	BLQ (LOQ 0.01)	Max. 0.01	SIMA/INS/STP/003
30	Benomyl	mg/kg	BLQ (LOQ 0.01)	Max. 0.01	SIMA/INS/STP/003
31	Bensulfuron Methyl	mg/kg	BLQ (LOQ 0.01)	Max. 0.01	SIMA/INS/STP/003
32	Bentazone	mg/kg	BLQ (LOQ 0.01)	Max. 0.01	SIMA/INS/STP/003
33	Beta Cyfluthrin	mg/kg	BLQ (LOQ 0.01)	Max. 0.01	SIMA/INS/STP/003
34	Bifenthrin	mg/kg	BLQ (LOQ 0.01)	Max. 0.01	SIMA/INS/STP/003



*Rupa Rani*

Rupa Rani  
Reviewed By

Authorized Signatory

*Bhoopendra Singh*

Bhoopendra Singh  
Tech. Manager

- Remarks:**
- This Test Report is not valid without a hologram.
  - The Results listed refer only to the above tested sample & applicable parameters. Endorsement of products is neither inferred nor implied.
  - Liability of laboratory is limited to the invoiced amount only. Any dispute arising out of this report shall be subject to Delhi jurisdiction only.
  - This Test Report is not to be reproduced wholly or in part as evidence in the Court of law without written permission from SIMA Labs Pvt. Ltd.
  - The Test Report should not be used wholly or in part in any advertising media without written permission from SIMA Labs Pvt. Ltd.
  - The sample(s) of Drugs & Cosmetics will be destroyed after one year, Perishable samples (Other than Drugs & Cosmetics) will be destroyed after 7 days and non perishable samples will be destroyed after 30 days of the date of issue of Test Report or unless otherwise specified.
  - SIMA Labs Pvt. Ltd. will not be held responsible for the authenticity of any photocopied, forged and or partially presented test reports.
  - SIMA Labs Pvt. Ltd. will ensure all corrective action as per our policy in case of any discrepancy in any sample tested by SIMA Labs Pvt. Ltd.
  - Re-testing charges will be applicable in case the results are reproducible.
  - Duplicable copy will be issued on chargeable basis.
  - SIMA Stands for : Sophisticated Industrial Materials Analytic

Page : 2 of 10

SB



Scan for Accreditation & Scope

\* Indicates details provided by the customer



## TEST REPORT

ULR : TC1122026100000268F

Party Code : A/DLH/19526

REPORT NO. : FS0117005526/N

S.No.	Test Parameters	Units	Results	Limits (as per FSSR-2011)	Test Method
35	Bispyribac Sodium	mg/kg	BLQ (LOQ 0.01)	Max. 0.01	SIMA/INS/STP/003
36	Bitertanol	mg/kg	BLQ (LOQ 0.01)	Max. 0.05	SIMA/INS/STP/003
37	Boscalid	mg/kg	BLQ (LOQ 0.01)	Max. 0.01	SIMA/INS/STP/003
38	Buprofezin	mg/kg	BLQ (LOQ 0.01)	Max. 0.01	SIMA/INS/STP/003
39	Butachlor	mg/kg	BLQ (LOQ 0.01)	Max. 0.01	SIMA/INS/STP/003
40	Captan	mg/kg	BLQ (LOQ 0.01)	Max. 0.01	SIMA/INS/STP/003
41	Carbaryl	mg/kg	BLQ (LOQ 0.01)	Max. 0.01	SIMA/INS/STP/003
42	Carbendazim	mg/kg	BLQ (LOQ 0.01)	Max. 0.10	SIMA/INS/STP/003
43	Carbofuran (sum of carbofuran and expressed as carbofuran)	mg/kg	BLQ (LOQ 0.01)	Max. 0.03	SIMA/INS/STP/003
44	Carbosulfan	mg/kg	BLQ (LOQ 0.01)	Max. 0.01	SIMA/INS/STP/003
45	Carfentrazone Ethyl	mg/kg	BLQ (LOQ 0.01)	Max. 0.01	SIMA/INS/STP/003
46	Carpropamid	mg/kg	BLQ (LOQ 0.01)	Max. 0.01	SIMA/INS/STP/003
47	Cartap Hydrochloride	mg/kg	BLQ (LOQ 0.01)	Max. 0.01	SIMA/INS/STP/003
48	Chlorantraniliprole	mg/kg	BLQ (LOQ 0.01)	Max. 0.01	SIMA/INS/STP/003
49	Chlorfenapyr	mg/kg	BLQ (LOQ 0.01)	Max. 0.01	SIMA/INS/STP/003
50	Chlorfluazuron	mg/kg	BLQ (LOQ 0.01)	Max. 0.01	SIMA/INS/STP/003
51	Chlorimuron ethyl	mg/kg	BLQ (LOQ 0.01)	Max. 0.05	SIMA/INS/STP/003
52	Chlormequat Chloride (CCC)	mg/kg	BLQ (LOQ 0.01)	Max. 0.01	SIMA/INS/STP/003
53	Chlorothalonil	mg/kg	BLQ (LOQ 0.01)	Max. 0.01	SIMA/INS/STP/003
54	Chlorpropham	mg/kg	BLQ (LOQ 0.01)	Max. 0.01	SIMA/INS/STP/003
55	Chlorpyrifos	mg/kg	BLQ (LOQ 0.01)	Max. 0.01	SIMA/INS/STP/003
56	Chlothianidin	mg/kg	BLQ (LOQ 0.01)	Max. 0.01	SIMA/INS/STP/003
57	Chromafenozide	mg/kg	BLQ (LOQ 0.01)	Max. 0.01	SIMA/INS/STP/003
58	Cinmethylen	mg/kg	BLQ (LOQ 0.01)	Max. 0.01	SIMA/INS/STP/003
59	Clodinafop-propargyl	mg/kg	BLQ (LOQ 0.01)	Max. 0.01	SIMA/INS/STP/003
60	Clomazone	mg/kg	BLQ (LOQ 0.01)	Max. 0.01	SIMA/INS/STP/003
61	Copper Hydroxide (Copper determined as elemental copper)	mg/kg	4.227	Max. 30	SIMA/INS/STP/004
62	Copper Oxychloride(Copper determined as elemental copper)	mg/kg	4.227	Max. 30	SIMA/INS/STP/004



*Rupa Rani*

Rupa Rani  
Reviewed By

Authorized Signatory

*Bhoopendra Singh*

Bhoopendra Singh  
Tech. Manager

**Remarks:** 1. This Test Report is not valid without a hologram.

- The Results listed refer only to the above tested sample & applicable parameters. Endorsement of products is neither inferred nor implied.
- Liability of laboratory is limited to the invoiced amount only. Any dispute arising out of this report shall be subject to Delhi jurisdiction only.
- This Test Report is not to be reproduced wholly or in part as evidence in the Court of law without written permission from SIMA Labs Pvt. Ltd.
- The Test Report should not be used wholly or in part in any advertising media without written permission from SIMA Labs Pvt. Ltd.
- The sample(s) of Drugs & Cosmetics will be destroyed after one year, Perishable samples (Other than Drugs & Cosmetics) will be destroyed after 7 days and non perishable samples will be destroyed after 30 days of the date of issue of Test Report or unless otherwise specified.
- SIMA Labs Pvt. Ltd. will not be held responsible for the authenticity of any photocopied, forged and or partially presented test reports.
- SIMA Labs Pvt. Ltd. will ensure all corrective action as per our policy in case of any discrepancy in any sample tested by SIMA Labs Pvt. Ltd.
- Re-testing charges will be applicable in case the results are reproducible.
- Duplicable copy will be issued on chargeable basis.
- SIMA Stands for : Sophisticated Industrial Materials Analytic

Page : 3 of 10

SB



Scan for Accreditation & Scope

\* Indicates details provided by the customer



# SIMA LABS

Sophisticated Industrial Materials  
Analytic Labs Pvt. Ltd.

(GOVT. APPROVED TESTING LABORATORIES)

Address : A-3/7, Mayapuri Industrial Area,  
Ph-II, New Delhi - 110064

Phone : +(91)-(011) 43854300

Email : reports@simalab.com

CIN No : U74899DL1988PTC031785

Website : www.simalab.net | www.simalab.com



TC-11220



## TEST REPORT

ULR : TC112202610000268F

Party Code : A/DLH/19526

REPORT NO. : FS0117005526/N

S.No.	Test Parameters	Units	Results	Limits (as per FSSR-2011)	Test Method
63	Copper Sulphate (Copper determined as elemental copper)	mg/kg	4.227	Max. 30	SIMA/INS/STP/004
64	Cuprous Oxide (Copper determined as elemental copper)	mg/kg	4.227	Max. 30	SIMA/INS/STP/004
65	Cyantranilipole	mg/kg	BLQ (LOQ 0.01)	Max. 0.01	SIMA/INS/STP/003
66	Cyazofamid	mg/kg	BLQ (LOQ 0.01)	Max. 0.01	SIMA/INS/STP/003
67	Cyflumetofen	mg/kg	BLQ (LOQ 0.01)	Max. 0.01	SIMA/INS/STP/003
68	Cyhalofop-butyl	mg/kg	BLQ (LOQ 0.01)	Max. 0.01	SIMA/INS/STP/003
69	Cymoxanil	mg/kg	BLQ (LOQ 0.01)	Max. 0.01	SIMA/INS/STP/003
70	Cypermethrin (sum of isomers)	mg/kg	BLQ (LOQ 0.01)	Max. 0.01	SIMA/INS/STP/003
71	Deltamethrin	mg/kg	BLQ (LOQ 0.01)	Max. 0.20	SIMA/INS/STP/003
72	Diafenthiuron	mg/kg	BLQ (LOQ 0.01)	Max. 0.01	SIMA/INS/STP/003
73	Dichlorvos (DDVP)	mg/kg	BLQ (LOQ 0.01)	Max. 0.25	SIMA/INS/STP/003
74	Diclofop	mg/kg	BLQ (LOQ 0.01)	Max. 0.01	SIMA/INS/STP/003
75	Diclosulam	mg/kg	BLQ (LOQ 0.01)	Max. 0.01	SIMA/INS/STP/003
76	Dicofol	mg/kg	BLQ (LOQ 0.01)	Max. 0.10	SIMA/INS/STP/003
77	Difenoconazole	mg/kg	BLQ (LOQ 0.01)	Max. 0.02	SIMA/INS/STP/003
78	Diflubenzuron	mg/kg	BLQ (LOQ 0.01)	Max. 0.01	SIMA/INS/STP/003
79	Dimethoate	mg/kg	BLQ (LOQ 0.01)	Max. 0.01	SIMA/INS/STP/003
80	Dimethomorph	mg/kg	BLQ (LOQ 0.01)	Max. 0.01	SIMA/INS/STP/003
81	Dinocap	mg/kg	BLQ (LOQ 0.01)	Max. 0.01	SIMA/INS/STP/003
82	Dinotefuran	mg/kg	BLQ (LOQ 0.01)	Max. 0.01	SIMA/INS/STP/003
83	Dithianon	mg/kg	BLQ (LOQ 0.01)	Max. 0.01	SIMA/INS/STP/003
84	Dithiocarbamates as CS2	mg/kg	BLQ (LOQ 0.01)	Max. 0.05	SIMA/INS/STP/003
85	Diuron	mg/kg	BLQ (LOQ 0.01)	Max. 0.01	SIMA/INS/STP/003
86	Dodine	mg/kg	BLQ (LOQ 0.01)	Max. 0.01	SIMA/INS/STP/003
87	Edifenphos	mg/kg	BLQ (LOQ 0.01)	Max. 0.01	SIMA/INS/STP/003
88	Emamectin Benzoate	mg/kg	BLQ (LOQ 0.01)	Max. 0.01	SIMA/INS/STP/003
89	Epoxyconazole	mg/kg	BLQ (LOQ 0.01)	Max. 0.01	SIMA/INS/STP/003
90	Ethephon	mg/kg	BLQ (LOQ 0.01)	Max. 0.01	SIMA/INS/STP/003
91	Ethion	mg/kg	BLQ (LOQ 0.01)	Max. 0.01	SIMA/INS/STP/003



*Rupa Rani*

Rupa Rani  
Reviewed By

Authorized Signatory

*Bhoopendra Singh*

Bhoopendra Singh  
Tech. Manager

- Remarks:**
- This Test Report is not valid without a hologram.
  - The Results listed refer only to the above tested sample & applicable parameters. Endorsement of products is neither inferred nor implied.
  - Liability of laboratory is limited to the invoiced amount only. Any dispute arising out of this report shall be subject to Delhi jurisdiction only.
  - This Test Report is not to be reproduced wholly or in part as evidence in the Court of law without written permission from SIMA Labs Pvt. Ltd.
  - The Test Report should not be used wholly or in part in any advertising media without written permission from SIMA Labs Pvt. Ltd.
  - The sample(s) of Drugs & Cosmetics will be destroyed after one year, Perishable samples (Other than Drugs & Cosmetics) will be destroyed after 7 days and non perishable samples will be destroyed after 30 days of the date of issue of Test Report or unless otherwise specified.
  - SIMA Labs Pvt. Ltd. will not be held responsible for the authenticity of any photocopied, forged and or partially presented test reports.
  - SIMA Labs Pvt. Ltd. will ensure all corrective action as per our policy in case of any discrepancy in any sample tested by SIMA Labs Pvt. Ltd.
  - Re-testing charges will be applicable in case the results are reproducible.
  - Duplicable copy will be issued on chargeable basis.
  - SIMA Stands for : Sophisticated Industrial Materials Analytic

Page : 4 of 10

SB



Scan for Accreditation & Scope

\* Indicates details provided by the customer



# SIMA LABS

Sophisticated Industrial Materials  
Analytic Labs Pvt. Ltd.

(GOVT. APPROVED TESTING LABORATORIES)

Address : A-3/7, Mayapuri Industrial Area,  
Ph-II, New Delhi - 110064

Phone : +(91)-(011) 43854300

Email : reports@simalab.com

CIN No : U74899DL1988PTC031785

Website : www.simalab.net | www.simalab.com



TC-11220



## TEST REPORT

ULR : TC112202610000268F

Party Code : A/DLH/19526

REPORT NO. : FS0117005526/N

S.No.	Test Parameters	Units	Results	Limits (as per FSSR-2011)	Test Method
92	Ethofenprox	mg/kg	BLQ (LOQ 0.01)	Max. 0.01	SIMA/INS/STP/003
93	Ethoxysulfuron	mg/kg	BLQ (LOQ 0.01)	Max. 0.01	SIMA/INS/STP/003
94	Etozazole	mg/kg	BLQ (LOQ 0.01)	Max. 0.01	SIMA/INS/STP/003
95	Famoxadone	mg/kg	BLQ (LOQ 0.01)	Max. 0.01	SIMA/INS/STP/003
96	Fenamidone	mg/kg	BLQ (LOQ 0.01)	Max. 0.01	SIMA/INS/STP/003
97	Fenarimol	mg/kg	BLQ (LOQ 0.01)	Max. 0.01	SIMA/INS/STP/003
98	Fenazaquin	mg/kg	BLQ (LOQ 0.01)	Max. 0.01	SIMA/INS/STP/003
99	Fenobucarb (BPMC)	mg/kg	BLQ (LOQ 0.01)	Max. 0.01	SIMA/INS/STP/003
100	Fenoxaprop-p-ethyl	mg/kg	BLQ (LOQ 0.01)	Max. 0.02	SIMA/INS/STP/003
101	Fenpropathrin	mg/kg	BLQ (LOQ 0.01)	Max. 0.01	SIMA/INS/STP/003
102	Fenpyroximate	mg/kg	BLQ (LOQ 0.01)	Max. 0.01	SIMA/INS/STP/003
103	Fenvalérate	mg/kg	BLQ (LOQ 0.01)	Max. 0.01	SIMA/INS/STP/003
104	Fipronil	mg/kg	BLQ (LOQ 0.01)	Max. 0.01	SIMA/INS/STP/003
105	Fonicamid	mg/kg	BLQ (LOQ 0.01)	Max. 0.01	SIMA/INS/STP/003
106	Fluazifop-p-butyl	mg/kg	BLQ (LOQ 0.01)	Max. 0.01	SIMA/INS/STP/003
107	Flubendiamide	mg/kg	BLQ (LOQ 0.01)	Max. 0.01	SIMA/INS/STP/003
108	Flucetosulfuron	mg/kg	BLQ (LOQ 0.01)	Max. 0.01	SIMA/INS/STP/003
109	Fluchloralin	mg/kg	BLQ (LOQ 0.01)	Max. 0.01	SIMA/INS/STP/003
110	Flufenacet	mg/kg	BLQ (LOQ 0.01)	Max. 0.01	SIMA/INS/STP/003
111	Fluopicolide	mg/kg	BLQ (LOQ 0.01)	Max. 0.01	SIMA/INS/STP/003
112	Fluopyram	mg/kg	BLQ (LOQ 0.01)	Max. 0.01	SIMA/INS/STP/003
113	Flupyradifurone	mg/kg	BLQ (LOQ 0.01)	Max. 0.01	SIMA/INS/STP/003
114	Flusilazole	mg/kg	BLQ (LOQ 0.01)	Max. 0.01	SIMA/INS/STP/003
115	Fluvalinate	mg/kg	BLQ (LOQ 0.01)	Max. 0.01	SIMA/INS/STP/003
116	Fluxapyroxad	mg/kg	BLQ (LOQ 0.01)	Max. 0.01	SIMA/INS/STP/003
117	Fomesafen	mg/kg	BLQ (LOQ 0.01)	Max. 0.01	SIMA/INS/STP/003
118	Forchlorfenuron	mg/kg	BLQ (LOQ 0.01)	Max. 0.01	SIMA/INS/STP/003
119	Fosetyl-Al	mg/kg	BLQ (LOQ 0.01)	Max. 0.01	SIMA/INS/STP/003
120	Glufosinate Ammonium	mg/kg	BLQ (LOQ 0.01)	Max. 0.01	SIMA/INS/STP/003
121	Glyphosate	mg/kg	BLQ (LOQ 0.01)	Max. 0.01	SIMA/INS/STP/003
122	Halosulfuron methyl	mg/kg	BLQ (LOQ 0.01)	Max. 0.01	SIMA/INS/STP/003



*Rupa Rani*

Rupa Rani  
Reviewed By

Authorized Signatory

*Bhoopendra Singh*

Bhoopendra Singh  
Tech. Manager

- Remarks:**
- This Test Report is not valid without a hologram.
  - The Results listed refer only to the above tested sample & applicable parameters. Endorsement of products is neither inferred nor implied.
  - Liability of laboratory is limited to the invoiced amount only. Any dispute arising out of this report shall be subject to Delhi jurisdiction only.
  - This Test Report is not to be reproduced wholly or in part as evidence in the Court of law without written permission from SIMA Labs Pvt. Ltd.
  - The Test Report should not be used wholly or in part in any advertising media without written permission from SIMA Labs Pvt. Ltd.
  - The sample(s) of Drugs & Cosmetics will be destroyed after one year, Perishable samples (Other than Drugs & Cosmetics) will be destroyed after 7 days and non perishable samples will be destroyed after 30 days of the date of issue of Test Report or unless otherwise specified.
  - SIMA Labs Pvt. Ltd. will not be held responsible for the authenticity of any photocopied, forged and or partially presented test reports.
  - SIMA Labs Pvt. Ltd. will ensure all corrective action as per our policy in case of any discrepancy in any sample tested by SIMA Labs Pvt. Ltd.
  - Re-testing charges will be applicable in case the results are reproducible.
  - Duplicable copy will be issued on chargeable basis.
  - SIMA Stands for : Sophisticated Industrial Materials Analytic

Page : 5 of 10

SB



Scan for Accreditation & Scope

\* Indicates details provided by the customer



# SIMA LABS

Sophisticated Industrial Materials  
Analytic Labs Pvt. Ltd.

(GOVT. APPROVED TESTING LABORATORIES)

Address : A-3/7, Mayapuri Industrial Area,  
Ph-II, New Delhi - 110064

Phone : +(91)-(011) 43854300

Email : reports@simalab.com

CIN No : U74899DL1988PTC031785

Website : www.simalab.net | www.simalab.com



TC-11220



## TEST REPORT

ULR : TC1122026100000268F

Party Code : A/DLH/19526

REPORT NO. : FS0117005526/N

S.No.	Test Parameters	Units	Results	Limits (as per FSSR-2011)	Test Method
123	Haloxypop-R Methyl	mg/kg	BLQ (LOQ 0.01)	Max. 0.01	SIMA/INS/STP/003
124	Hexaconazole	mg/kg	BLQ (LOQ 0.01)	Max. 0.01	SIMA/INS/STP/003
125	Hexazinone	mg/kg	BLQ (LOQ 0.01)	Max. 0.01	SIMA/INS/STP/003
126	Hexythiazox	mg/kg	BLQ (LOQ 0.01)	Max. 0.01	SIMA/INS/STP/003
127	Hydrogen Cyanamide	mg/kg	BLQ (LOQ 0.01)	Max. 0.01	SIMA/INS/STP/003
128	Imazamox	mg/kg	BLQ (LOQ 0.01)	Max. 0.01	SIMA/INS/STP/003
129	Imazethapyr	mg/kg	BLQ (LOQ 0.01)	Max. 0.01	SIMA/INS/STP/003
130	Imidacloprid	mg/kg	BLQ (LOQ 0.01)	Max. 0.01	SIMA/INS/STP/003
131	Indoxacarb	mg/kg	BLQ (LOQ 0.01)	Max. 0.01	SIMA/INS/STP/003
132	Iodosulfuron Methyl Sodium	mg/kg	BLQ (LOQ 0.01)	Max. 0.01	SIMA/INS/STP/003
133	Iprobenfos (Kitazin)	mg/kg	BLQ (LOQ 0.01)	Max. 0.01	SIMA/INS/STP/003
134	Iprodione	mg/kg	BLQ (LOQ 0.01)	Max. 0.01	SIMA/INS/STP/003
135	Isoprothiolane	mg/kg	BLQ (LOQ 0.01)	Max. 0.01	SIMA/INS/STP/003
136	Isoproturon	mg/kg	BLQ (LOQ 0.01)	Max. 0.10	SIMA/INS/STP/003
137	Kasugamycin	mg/kg	BLQ (LOQ 0.01)	Max. 0.01	SIMA/INS/STP/003
138	Kresoxim Methyl	mg/kg	BLQ (LOQ 0.01)	Max. 0.05	SIMA/INS/STP/003
139	Lambda cyhalothrin	mg/kg	BLQ (LOQ 0.01)	Max. 0.01	SIMA/INS/STP/003
140	Linuron	mg/kg	BLQ (LOQ 0.01)	Max. 0.01	SIMA/INS/STP/003
141	Lufenuron	mg/kg	BLQ (LOQ 0.01)	Max. 0.01	SIMA/INS/STP/003
142	Malathion	mg/kg	BLQ (LOQ 0.01)	Max. 1.0	SIMA/INS/STP/003
143	Mandipropamid	mg/kg	BLQ (LOQ 0.01)	Max. 0.01	SIMA/INS/STP/003
144	Mepiquat Chloride	mg/kg	BLQ (LOQ 0.01)	Max. 0.01	SIMA/INS/STP/003
145	Mesosulfuron Methyl	mg/kg	BLQ (LOQ 0.01)	Max. 0.01	SIMA/INS/STP/003
146	Metaflumizone	mg/kg	BLQ (LOQ 0.01)	Max. 0.01	SIMA/INS/STP/003
147	Metalaxyl	mg/kg	BLQ (LOQ 0.01)	Max. 0.01	SIMA/INS/STP/003
148	Metalaxyl-M	mg/kg	BLQ (LOQ 0.01)	Max. 0.01	SIMA/INS/STP/003
149	Methabenzthiazuron	mg/kg	BLQ (LOQ 0.01)	Max. 0.5	SIMA/INS/STP/003
150	Methomyl	mg/kg	BLQ (LOQ 0.01)	Max. 0.01	SIMA/INS/STP/003
151	Methyl Chlorophenoxy Acetic Acid (MCPA)	mg/kg	BLQ (LOQ 0.01)	Max. 0.2	SIMA/INS/STP/003
152	Methyl Parathion	mg/kg	BLQ (LOQ 0.01)	Max. 0.01	SIMA/INS/STP/003



*Rupa Rani*

Rupa Rani  
Reviewed By

Authorized Signatory

*Bhoopendra Singh*

Bhoopendra Singh  
Tech. Manager

- Remarks:**
- This Test Report is not valid without a hologram.
  - The Results listed refer only to the above tested sample & applicable parameters. Endorsement of products is neither inferred nor implied.
  - Liability of laboratory is limited to the invoiced amount only. Any dispute arising out of this report shall be subject to Delhi jurisdiction only.
  - This Test Report is not to be reproduced wholly or in part as evidence in the Court of law without written permission from SIMA Labs Pvt. Ltd.
  - The Test Report should not be used wholly or in part in any advertising media without written permission from SIMA Labs Pvt. Ltd.
  - The sample(s) of Drugs & Cosmetics will be destroyed after one year, Perishable samples (Other than Drugs & Cosmetics) will be destroyed after 7 days and non perishable samples will be destroyed after 30 days of the date of issue of Test Report or unless otherwise specified.
  - SIMA Labs Pvt. Ltd. will not be held responsible for the authenticity of any photocopied, forged and or partially presented test reports.
  - SIMA Labs Pvt. Ltd. will ensure all corrective action as per our policy in case of any discrepancy in any sample tested by SIMA Labs Pvt. Ltd.
  - Re-testing charges will be applicable in case the results are reproducible.
  - Duplicable copy will be issued on chargeable basis.
  - SIMA Stands for : Sophisticated Industrial Materials Analytic

Page : 6 of 10

SB



Scan for Accreditation & Scope

\* Indicates details provided by the customer



# SIMA LABS

Sophisticated Industrial Materials  
Analytic Labs Pvt. Ltd.

(GOVT. APPROVED TESTING LABORATORIES)

Address : A-3/7, Mayapuri Industrial Area,  
Ph-II, New Delhi - 110064

Phone : +(91)-(011) 43854300

Email : reports@simalab.com

CIN No : U74899DL1988PTC031785

Website : www.simalab.net | www.simalab.com



TC-11220



## TEST REPORT

ULR : TC112202610000268F

Party Code : A/DLH/19526

REPORT NO. : FS0117005526/N

S.No.	Test Parameters	Units	Results	Limits (as per FSSR-2011)	Test Method
153	Metolachlor	mg/kg	BLQ (LOQ 0.01)	Max. 0.01	SIMA/INS/STP/003
154	Metrafenone	mg/kg	BLQ (LOQ 0.01)	Max. 0.01	SIMA/INS/STP/003
155	Metribuzin	mg/kg	BLQ (LOQ 0.01)	Max. 0.01	SIMA/INS/STP/003
156	Metsulfuron Methyl	mg/kg	BLQ (LOQ 0.01)	Max. 0.01	SIMA/INS/STP/003
157	Milbemectin	mg/kg	BLQ (LOQ 0.01)	Max. 0.01	SIMA/INS/STP/003
158	Monocrotophos	mg/kg	BLQ (LOQ 0.01)	Max. 0.01	SIMA/INS/STP/003
159	Myclobutanil	mg/kg	BLQ (LOQ 0.01)	Max. 0.01	SIMA/INS/STP/003
160	Novaluron	mg/kg	BLQ (LOQ 0.01)	Max. 0.01	SIMA/INS/STP/003
161	Orthosulfamuron	mg/kg	BLQ (LOQ 0.01)	Max. 0.01	SIMA/INS/STP/003
162	Oxadiazyl	mg/kg	BLQ (LOQ 0.01)	Max. 0.01	SIMA/INS/STP/003
163	Oxadiazon	mg/kg	BLQ (LOQ 0.01)	Max. 0.01	SIMA/INS/STP/003
164	Oxydemeton-Methyl	mg/kg	BLQ (LOQ 0.01)	Max. 0.02	SIMA/INS/STP/003
165	Oxyfluorfen	mg/kg	BLQ (LOQ 0.01)	Max. 0.01	SIMA/INS/STP/003
166	Paclobutrazol	mg/kg	BLQ (LOQ 0.01)	Max. 0.01	SIMA/INS/STP/003
167	Paraquat dichloride	mg/kg	BLQ (LOQ 0.01)	Max. 0.03	SIMA/INS/STP/003
168	Penconazole	mg/kg	BLQ (LOQ 0.01)	Max. 0.01	SIMA/INS/STP/003
169	Pencycuron	mg/kg	BLQ (LOQ 0.01)	Max. 0.01	SIMA/INS/STP/003
170	Pendimethalin	mg/kg	BLQ (LOQ 0.01)	Max. 0.05	SIMA/INS/STP/003
171	Penoxuslum	mg/kg	BLQ (LOQ 0.01)	Max. 0.01	SIMA/INS/STP/003
172	Permethrin	mg/kg	BLQ (LOQ 0.01)	Max. 0.01	SIMA/INS/STP/003
173	Phenthoate	mg/kg	BLQ (LOQ 0.01)	Max. 0.01	SIMA/INS/STP/003
174	Phorate	mg/kg	BLQ (LOQ 0.01)	Max. 0.01	SIMA/INS/STP/003
175	Phorate sulfone	mg/kg	BLQ (LOQ 0.01)	Max. 0.01	SIMA/INS/STP/003
176	Phorate sulfoxide	mg/kg	BLQ (LOQ 0.01)	Max. 0.01	SIMA/INS/STP/003
177	Phosalone	mg/kg	BLQ (LOQ 0.01)	Max. 0.01	SIMA/INS/STP/003
178	Picoxystrobin	mg/kg	BLQ (LOQ 0.01)	Max. 0.05	SIMA/INS/STP/003
179	Pinoxaden	mg/kg	BLQ (LOQ 0.01)	Max. 0.7	SIMA/INS/STP/003
180	Pirimiphos-methyl	mg/kg	BLQ (LOQ 0.01)	Max. 1.0	SIMA/INS/STP/003
181	Pretilachlor	mg/kg	BLQ (LOQ 0.01)	Max. 0.01	SIMA/INS/STP/003
182	Profenofos	mg/kg	BLQ (LOQ 0.01)	Max. 0.01	SIMA/INS/STP/003
183	Prohexadione calcium	mg/kg	BLQ (LOQ 0.01)	Max. 0.01	SIMA/INS/STP/003



*Rupa Rani*

Rupa Rani  
Reviewed By

Authorized Signatory

*Bhoopendra Singh*

Bhoopendra Singh  
-Tech. Manager

- Remarks:**
1. This Test Report is not valid without a hologram.
  2. The Results listed refer only to the above tested sample & applicable parameters. Endorsement of products is neither inferred nor implied.
  3. Liability of laboratory is limited to the invoiced amount only. Any dispute arising out of this report shall be subject to Delhi jurisdiction only.
  4. This Test Report is not to be reproduced wholly or in part as evidence in the Court of law without written permission from SIMA Labs Pvt. Ltd.
  5. The Test Report should not be used wholly or in part in any advertising media without written permission from SIMA Labs Pvt. Ltd.
  6. The sample(s) of Drugs & Cosmetics will be destroyed after one year, Perishable samples (Other than Drugs & Cosmetics) will be destroyed after 7 days and non perishable samples will be destroyed after 30 days of the date of issue of Test Report or unless otherwise specified.
  7. SIMA Labs Pvt. Ltd. will not be held responsible for the authenticity of any photocopied, forged and or partially presented test reports.
  8. SIMA Labs Pvt. Ltd. will ensure all corrective action as per our policy in case of any discrepancy in any sample tested by SIMA Labs Pvt. Ltd.
  9. Re-testing charges will be applicable in case the results are reproducible.
  10. Duplicable copy will be issued on chargeable basis.
  11. SIMA Stands for : Sophisticated Industrial Materials Analytic

Page : 7 of 10

SB



Scan for Accreditation & Scope

\* Indicates details provided by the customer



# SIMA LABS

Sophisticated Industrial Materials  
Analytic Labs Pvt. Ltd.

(GOVT. APPROVED TESTING LABORATORIES)

Address : A-3/7, Mayapuri Industrial Area,  
Ph-II, New Delhi - 110064

Phone : +(91)-(011) 43854300

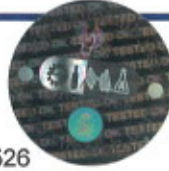
Email : reports@simalab.com

CIN No : U74899DL1988PTC031785

Website : www.simalab.net | www.sjmalab.com



TC-11220



## TEST REPORT

ULR : TC112202610000268F

Party Code : A/DLH/19526

REPORT NO. : FS0117005526/N

S.No.	Test Parameters	Units	Results	Limits (as per FSSR-2011)	Test Method
184	Propanil	mg/kg	BLQ (LOQ 0.01)	Max. 0.01	SIMA/INS/STP/003
185	Propaquizafop	mg/kg	BLQ (LOQ 0.01)	Max. 0.01	SIMA/INS/STP/003
186	Propargite	mg/kg	BLQ (LOQ 0.01)	Max. 0.01	SIMA/INS/STP/003
187	Propiconazole	mg/kg	BLQ (LOQ 0.01)	Max. 0.05	SIMA/INS/STP/003
188	Propineb	mg/kg	BLQ (LOQ 0.01)	Max. 0.01	SIMA/INS/STP/003
189	Pymetrozine	mg/kg	BLQ (LOQ 0.01)	Max. 0.01	SIMA/INS/STP/003
190	Pyraclostrobin	mg/kg	BLQ (LOQ 0.01)	Max. 0.01	SIMA/INS/STP/003
191	Pyrazosulfuron ethyl	mg/kg	BLQ (LOQ 0.01)	Max. 0.01	SIMA/INS/STP/003
192	Pyridalyl	mg/kg	BLQ (LOQ 0.01)	Max. 0.01	SIMA/INS/STP/003
193	Pyriproxyfen	mg/kg	BLQ (LOQ 0.01)	Max. 0.01	SIMA/INS/STP/003
194	Pyrithiolac Sodium	mg/kg	BLQ (LOQ 0.01)	Max. 0.01	SIMA/INS/STP/003
195	Quinalphos	mg/kg	BLQ (LOQ 0.01)	Max. 0.01	SIMA/INS/STP/003
196	Quizalofop ethyl	mg/kg	BLQ (LOQ 0.01)	Max. 0.01	SIMA/INS/STP/003
197	Quizalofop-P-tefuryl	mg/kg	BLQ (LOQ 0.01)	Max. 0.01	SIMA/INS/STP/003
198	Sodium Aceflourofen	mg/kg	BLQ (LOQ 0.01)	Max. 0.01	SIMA/INS/STP/003
199	Sodium Para Nitro Phenolate	mg/kg	BLQ (LOQ 0.01)	Max. 0.01	SIMA/INS/STP/003
200	Spinetoram	mg/kg	BLQ (LOQ 0.01)	Max. 0.01	SIMA/INS/STP/003
201	Spinosad	mg/kg	BLQ (LOQ 0.01)	Max. 0.01	SIMA/INS/STP/003
202	Spiromesifen	mg/kg	BLQ (LOQ 0.01)	Max. 0.01	SIMA/INS/STP/003
203	Spirotetramat	mg/kg	BLQ (LOQ 0.01)	Max. 0.01	SIMA/INS/STP/003
204	Sulfentrazone	mg/kg	BLQ (LOQ 0.01)	Max. 0.01	SIMA/INS/STP/003
205	Sulfosulfuron	mg/kg	BLQ (LOQ 0.01)	Max. 0.02	SIMA/INS/STP/003
206	Sulfoxaflor	mg/kg	BLQ (LOQ 0.01)	Max. 0.01	SIMA/INS/STP/003
207	Sum of benomyl and carbendazim expressed as carbendazim	mg/kg	BLQ (LOQ 0.01)	Max. 0.10	SIMA/INS/STP/003
208	Tebuconazole	mg/kg	BLQ (LOQ 0.01)	Max. 0.15	SIMA/INS/STP/003
209	Tembotrione	mg/kg	BLQ (LOQ 0.01)	Max. 0.01	SIMA/INS/STP/003
210	Tetraconazole	mg/kg	BLQ (LOQ 0.01)	Max. 0.01	SIMA/INS/STP/003
211	Thiacloprid	mg/kg	BLQ (LOQ 0.01)	Max. 0.01	SIMA/INS/STP/003
212	Thiamethoxam	mg/kg	BLQ (LOQ 0.01)	Max. 0.05	SIMA/INS/STP/003
213	Thifluzamide	mg/kg	BLQ (LOQ 0.01)	Max. 0.01	SIMA/INS/STP/003



*Rupa Rani*

Rupa Rani  
Reviewed By

Authorized Signatory

*Bhoopendra Singh*

Bhoopendra Singh  
Tech. Manager

- Remarks:** 1. This Test Report is not valid without a hologram.  
2. The Results listed refer only to the above tested sample & applicable parameters. Endorsement of products is neither inferred nor implied.  
3. Liability of laboratory is limited to the invoiced amount only. Any dispute arising out of this report shall be subject to Delhi jurisdiction only.  
4. This Test Report is not to be reproduced wholly or in part as evidence in the Court of law without written permission from SIMA Labs Pvt. Ltd.  
5. The Test Report should not be used wholly or in part in any advertising media without written permission from SIMA Labs Pvt. Ltd.  
6. The sample(s) of Drugs & Cosmetics will be destroyed after one year, Perishable samples (Other than Drugs & Cosmetics) will be destroyed after 7 days and non perishable samples will be destroyed after 30 days of the date of issue of Test Report or unless otherwise specified.  
7. SIMA Labs Pvt. Ltd. will not be held responsible for the authenticity of any photocopied, forged and or partially presented test reports.  
8. SIMA Labs Pvt. Ltd. will ensure all corrective action as per our policy in case of any discrepancy in any sample tested by SIMA Labs Pvt. Ltd.  
9. Re-testing charges will be applicable in case the results are reproducible.  
10. Duplicable copy will be issued on chargeable basis.  
11. SIMA Stands for : Sophisticated Industrial Materials Analytic

Page : 8 of 10

SB



Scan for Accreditation & Scope

\* Indicates details provided by the customer



# SIMA LABS

Sophisticated Industrial Materials  
Analytic Labs Pvt. Ltd.

(GOVT. APPROVED TESTING LABORATORIES)

Address : A-3/7, Mayapuri Industrial Area,  
Ph-II, New Delhi - 110064

Phone : +(91)-(011) 43854300

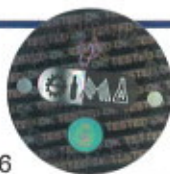
Email : reports@simalab.com

CIN No : U74899DL1988PTC031785

Website : www.simalab.net | www.simalab.com



TC-11220



## TEST REPORT

ULR : TC112202610000268F

Party Code : A/DLH/19526

REPORT NO. : FS0117005526/N

S.No.	Test Parameters	Units	Results	Limits (as per FSSR-2011)	Test Method
214	Thiocyclam Hydrogen Oxalate	mg/kg	BLQ (LOQ 0.01)	Max. 0.01	SIMA/INS/STP/003
215	Thiodicarb	mg/kg	BLQ (LOQ 0.01)	Max. 0.01	SIMA/INS/STP/003
216	Thiometon	mg/kg	BLQ (LOQ 0.01)	Max. 0.01	SIMA/INS/STP/003
217	Thiometon sulfoxide	mg/kg	BLQ (LOQ 0.01)	Max. 0.01	SIMA/INS/STP/003
218	Thiophanate-Methyl	mg/kg	BLQ (LOQ 0.01)	Max. 0.03	SIMA/INS/STP/003
219	Tolfenpyrad	mg/kg	BLQ (LOQ 0.01)	Max. 0.01	SIMA/INS/STP/003
220	Topramezone	mg/kg	BLQ (LOQ 0.01)	Max. 0.01	SIMA/INS/STP/003
221	Triacantanol	mg/kg	BLQ (LOQ 0.01)	Max. 0.01	SIMA/INS/STP/003
222	Triadimefon	mg/kg	BLQ (LOQ 0.01)	Max. 0.5	SIMA/INS/STP/003
223	Triallate	mg/kg	BLQ (LOQ 0.01)	Max. 0.05	SIMA/INS/STP/003
224	Triazophos	mg/kg	BLQ (LOQ 0.01)	Max. 0.01	SIMA/INS/STP/003
225	Triasulfuron	mg/kg	BLQ (LOQ 0.01)	Max. 0.01	SIMA/INS/STP/003
226	Trichlorfon	mg/kg	BLQ (LOQ 0.01)	Max. 0.01	SIMA/INS/STP/003
227	Tricyclazole	mg/kg	BLQ (LOQ 0.01)	Max. 0.01	SIMA/INS/STP/003
228	Tridemorph	mg/kg	BLQ (LOQ 0.01)	Max. 0.10	SIMA/INS/STP/003
229	Trifloxystrobin	mg/kg	BLQ (LOQ 0.01)	Max. 0.2	SIMA/INS/STP/003
230	Trifluralin	mg/kg	BLQ (LOQ 0.01)	Max. 0.05	SIMA/INS/STP/003
231	Validamycin	mg/kg	BLQ (LOQ 0.01)	Max. 0.01	SIMA/INS/STP/003
232	Aldicarb	mg/kg	BLQ (LOQ 0.01)	Max. 0.01	SIMA/INS/STP/003
233	Aldrin	mg/kg	BLQ (LOQ 0.01)	Max. 0.01	SIMA/INS/STP/003
234	Chlordane (Total of cis- and trans-chlordane)	mg/kg	BLQ (LOQ 0.01)	Max. 0.01	SIMA/INS/STP/003
235	Dieldrin	mg/kg	BLQ (LOQ 0.01)	Max. 0.01	SIMA/INS/STP/003
236	Heptachlor ( heptachlor metabolite, heptachlor epoxide)	mg/kg	BLQ (LOQ 0.01)	Max. 0.01	SIMA/INS/STP/003
237	Lindane (Gamma HCH), Alpha HCH, Beta HCH & delta-HCH)	mg/kg	BLQ (LOQ 0.01)	Max. 0.01	SIMA/INS/STP/003
238	Endosulfan (Total of alpha endosulfan & beta endosulfan and endosulfan sulphate)	mg/kg	BLQ (LOQ 0.01)	Max. 0.01	SIMA/INS/STP/003
239	Phosphamidon	mg/kg	BLQ (LOQ 0.01)	Max. 0.01	SIMA/INS/STP/003
240	Captafol	mg/kg	BLQ (LOQ 0.01)	Max. 0.01	SIMA/INS/STP/003



*Rupa Rani*

Rupa Rani

Reviewed By

Authorized Signatory

*Bhoopendra Singh*

Bhoopendra Singh

Tech. Manager

- Remarks:**
- This Test Report is not valid without a hologram.
  - The Results listed refer only to the above tested sample & applicable parameters. Endorsement of products is neither inferred nor implied.
  - Liability of laboratory is limited to the invoiced amount only. Any dispute arising out of this report shall be subject to Delhi jurisdiction only.
  - This Test Report is not to be reproduced wholly or in part as evidence in the Court of law without written permission from SIMA Labs Pvt. Ltd.
  - The Test Report should not be used wholly or in part in any advertising media without written permission from SIMA Labs Pvt. Ltd.
  - The sample(s) of Drugs & Cosmetics will be destroyed after one year, Perishable samples (Other than Drugs & Cosmetics) will be destroyed after 7 days and non perishable samples will be destroyed after 30 days of the date of issue of Test Report or unless otherwise specified.
  - SIMA Labs Pvt. Ltd. will not be held responsible for the authenticity of any photocopied, forged and or partially presented test reports.
  - SIMA Labs Pvt. Ltd. will ensure all corrective action as per our policy in case of any discrepancy in any sample tested by SIMA Labs Pvt. Ltd.
  - Re-testing charges will be applicable in case the results are reproducible.
  - Duplicable copy will be issued on chargeable basis.
  - SIMA Stands for : Sophisticated Industrial Materials Analytic

Page : 9 of 10

SB



Scan for Accreditation & Scope

\* Indicates details provided by the customer



# SIMA LABS

Sophisticated Industrial Materials  
Analytic Labs Pvt. Ltd.

(GOVT. APPROVED TESTING LABORATORIES)

Address : A-3/7, Mayapuri Industrial Area,  
Ph-II, New Delhi - 110064

Phone : +(91)-(011) 43854300

Email : reports@simalab.com

CIN No : U74899DL1988PTC031785

Website : www.simalab.net | www.simalab.com



## TEST REPORT

ULR : TC1122026100000268F

Party Code : A/DLH/19526

REPORT NO. : FS0117005526/N

S.No.	Test Parameters	Units	Results	Limits (as per FSSR-2011)	Test Method
241	Ferbam	mg/kg	BLQ (LOQ 0.01)	Max. 0.01	SIMA/INS/STP/003
242	Formothion	mg/kg	BLQ (LOQ 0.01)	Max. 0.01	SIMA/INS/STP/003
243	Simazine	mg/kg	BLQ (LOQ 0.01)	Max. 0.01	SIMA/INS/STP/003
244	Diazinon	mg/kg	BLQ (LOQ 0.01)	Max. 0.01	SIMA/INS/STP/003
245	Fenitrothion	mg/kg	BLQ (LOQ 0.01)	Max. 0.01	SIMA/INS/STP/003
246	Fenthion	mg/kg	BLQ (LOQ 0.01)	Max. 0.01	SIMA/INS/STP/003
247	Ethyl Parathion	mg/kg	BLQ (LOQ 0.01)	Max. 0.01	SIMA/INS/STP/003
<b>Heavy metals:</b>					
248	Lead (as Pb)	mg/kg	0.027	Max. 2.5	SIMA/INS/STP/004
249	Arsenic (as As)	mg/kg	BLQ (LOQ 0.20)	Max. 1.1	SIMA/INS/STP/004
250	Cadmium (as Cd)	mg/kg	0.037	Max. 1.5	SIMA/INS/STP/004
251	Mercury (as Hg)	mg/kg	BLQ (LOQ 0.20)	Max. 1.0	SIMA/INS/STP/004
252	Copper (as Cu)	mg/kg	4.227	Max. 30	SIMA/INS/STP/004
253	Tin (as Sn)	mg/kg	BLQ (LOQ 0.100)	Max. 250	SIMA/INS/STP/004
<b>Other contaminations:</b>					
254	Melamine	mg/kg	BLQ (LOQ 0.25)	Max. 2.5	SIMA/INS/STP/024
<b>Crop contaminants</b>					
255	Total Aflatoxin	µg/kg	BLQ (LOQ 4.0)	Max. 15	SIMA/INS/STP/006
256	Aflatoxin B1	µg/kg	BLQ (LOQ 1.0)	Max. 10	SIMA/INS/STP/006
257	Ochratoxin A	µg/kg	BLQ (LOQ 2.0)	Max 20	SIMA/INS/STP/032
258	Deoxynivalenol	µg/kg	BLQ (LOQ 50.0)	Max 1000	SIMA/INS/STP/031

Remark : The submitted sample conforms to the requirement of Food Safety and Standards Regulation (2011) with respect to above specified test parameters only.

BLQ = Below Limit of Quantification. , LOQ = Limit of Quantification

--- End of Test Report ---



*Rupa Rani*

Rupa Rani  
Reviewed By

Authorized Signatory

*Bhoopendra Singh*

Bhoopendra Singh  
Tech. Manager

- Remarks:**
- This Test Report is not valid without a hologram.
  - The Results listed refer only to the above tested sample & applicable parameters. Endorsement of products is neither inferred nor implied.
  - Liability of laboratory is limited to the invoiced amount only. Any dispute arising out of this report shall be subject to Delhi jurisdiction only.
  - This Test Report is not to be reproduced wholly or in part as evidence in the Court of law without written permission from SIMA Labs Pvt. Ltd.
  - The Test Report should not be used wholly or in part in any advertising media without written permission from SIMA Labs Pvt. Ltd.
  - The sample(s) of Drugs & Cosmetics will be destroyed after one year, Perishable samples (Other than Drugs & Cosmetics) will be destroyed after 7 days and non perishable samples will be destroyed after 30 days of the date of issue of Test Report or unless otherwise specified.
  - SIMA Labs Pvt. Ltd. will not be held responsible for the authenticity of any photocopied, forged and or partially presented test reports.
  - SIMA Labs Pvt. Ltd. will ensure all corrective action as per our policy in case of any discrepancy in any sample tested by SIMA Labs Pvt. Ltd.
  - Re-testing charges will be applicable in case the results are reproducible.
  - Duplicable copy will be issued on chargeable basis.
  - SIMA Stands for : Sophisticated Industrial Materials Analytic

Page : 10 of 10

SB



Scan for Accreditation & Scope

\* Indicates details provided by the customer



# SIMA LABS

Sophisticated Industrial Materials  
Analytic Labs Pvt. Ltd.

(GOVT. APPROVED TESTING LABORATORIES)

Address : A-3/7, Mayapuri Industrial Area,  
Ph-II, New Delhi - 110064

Phone : +(91)-(011) 43854300

Email : reports@simalab.com

CIN No : U74899DL1988PTC031785

Website : www.simalab.net | www.simalab.com



## TEST REPORT

Party Code : A/DLH/19526  
\*Issued to : Ajay Dalal  
RZ-10, Baba Haridas Nagar, Near New Anaj Mandi,  
Najafgarh, New Delhi-110043 - .  
\*Sample Name : Shakti Bhog Atta  
\*Mfg. by : Mata Mansa Devi Roller Flour Mills  
\*Mfg. Date : 20/12/2025  
\*Exp.Date/Best Before : 19/04/2026

REPORT NO. : FS0117005526/O  
\*Customer Ref.No. : NS  
\*Reference Date : 17/01/2026  
Date of Receiving : 17/01/2026  
Date of Issue : 31/01/2026  
Start Date of Analysis : 17/01/2026  
Date of Completion : 30/01/2026  
Sample Condition : OK  
Sample Packing : Plastic Bag  
\*FSSAI Lic. No : NS  
\*Sample Qty. : 01x5 Kg  
\*Batch No./Lot No. : KLMB 240  
Test Method Deviation : NA  
Sample Collection : Sample Collected By Us

### RESULTS OF ANALYSIS

Reference : As per Party's Requirement

Test Parameters	Units	Results	Limits (as per FSSR-2011)	Test Method
<b>Heavy metals:</b>				
1 Methyl Mercury (Calculated as the element)	mg/kg	BLQ (LOQ 0.20)	Max 0.250	SIMA/INS/STP/004

Remark : The submitted sample conforms to the requirement of Food Safety and Standards Regulation (2011) with respect to above specified test parameters only.

BLQ = Below Limit of Quantification. , LOQ = Limit of Quantification

--- End of Test Report ---



*Rupa Rani*  
Rupa Rani  
Reviewed By

Authorized Signatory

*Bhoopendra Singh*  
Bhoopendra Singh  
Tech. Manager

- Remarks:
1. This Test Report is not valid without a hologram.
  2. The Results listed refer only to the above tested sample & applicable parameters. Endorsement of products is neither inferred nor implied.
  3. Liability of laboratory is limited to the invoiced amount only. Any dispute arising out of this report shall be subject to Delhi jurisdiction only.
  4. This Test Report is not to be reproduced wholly or in part as evidence in the Court of law without written permission from SIMA Labs Pvt. Ltd.
  5. The Test Report should not be used wholly or in part in any advertising media without written permission from SIMA Labs Pvt. Ltd.
  6. The sample(s) of Drugs & Cosmetics will be destroyed after one year, Perishable samples (Other than Drugs & Cosmetics) will be destroyed after 7 days and non perishable samples will be destroyed after 30 days of the date of issue of Test Report or unless otherwise specified.
  7. SIMA Labs Pvt. Ltd. will not be held responsible for the authenticity of any photocopied, forged and or partially presented test reports.
  8. SIMA Labs Pvt. Ltd. will ensure all corrective action as per our policy in case of any discrepancy in any sample tested by SIMA Labs Pvt. Ltd.
  9. Re-testing charges will be applicable in case the results are reproducible.
  10. Duplicable copy will be issued on chargeable basis.
  11. SIMA Stands for : Sophisticated Industrial Materials Analytic

Page : 1 of 1

SB

\* Indicates details provided by the customer